

"Easy & Fast" Pain Relief Praster

Spiral Taping Therapy

What is the Spiral Taping?

The Spiral Taping refers to a medical taping care remedy removing pain based on the muscular anatomy and balancing theory of Oriental Medicine, activating the physical body energy applying the Spiral Energy Theory.

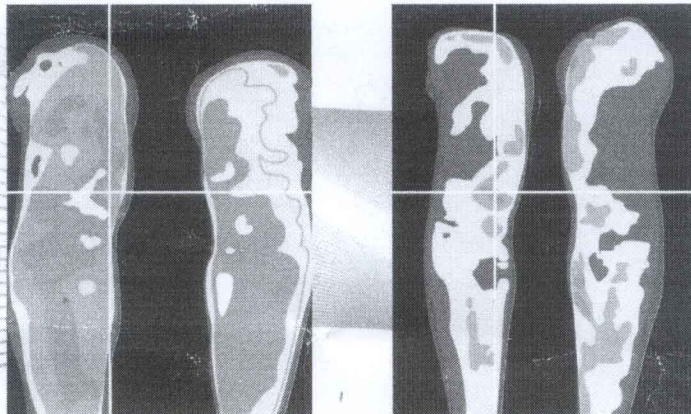
Principle of Spiral Taping Method

According to the Spiral Taping theory, feeling pain comes when the body balance is upset such as swelling, fat stomach or lumped muscle. The Spiral Taping eliminates pain correcting the upset body balance by attaching the tape over the special nerve parts & spots on the body suitable for acupuncture or spots feeling pain around the body showing the signs of illness. Beside, the Spiral Energy theory dictates that the energy of human body flows toward the spiral direction similar to the shape of fingerprint or DNA structure. The respective curing speed can be different in general, when wrapping the tap to right or, on the contrary, wrapping to left depending on the direction of energies. Following the theory mentioned above, attaching the grid shaped tape toward the direction coinciding with the energy flow of human body not only soothes the muscular pains but also enhances the curing speed of other symptoms fast as well.

Effect

The photograph (1) shows the thermal image before attaching the Spiral Tape to a patient appealing of knee pain. The thermal image detector is a device indicating the temperature distribution of body surface with image display. Whole screen image shows red color as the temperature goes up since the knee generates heat due to the inflammation on knee. However, with the Spiral Tape attached, the screen image of pain spot turns into green color in less than 10 seconds as shown on the photograph (2), meaning that the temperature of pain spot goes down vanishing the pain.

<Reference: "Pain Removing Taping Clinic" edited by the Korean Association for Spiral Taping>



(1) Thermal Image of knee spot prior to attaching the tape (Indicating the knee temperature is high when the overall image shows red.)

(2) Thermal Image of knee spot after attaching the tape (Displaying scattered images showing the state with the knee temperature lowered.)